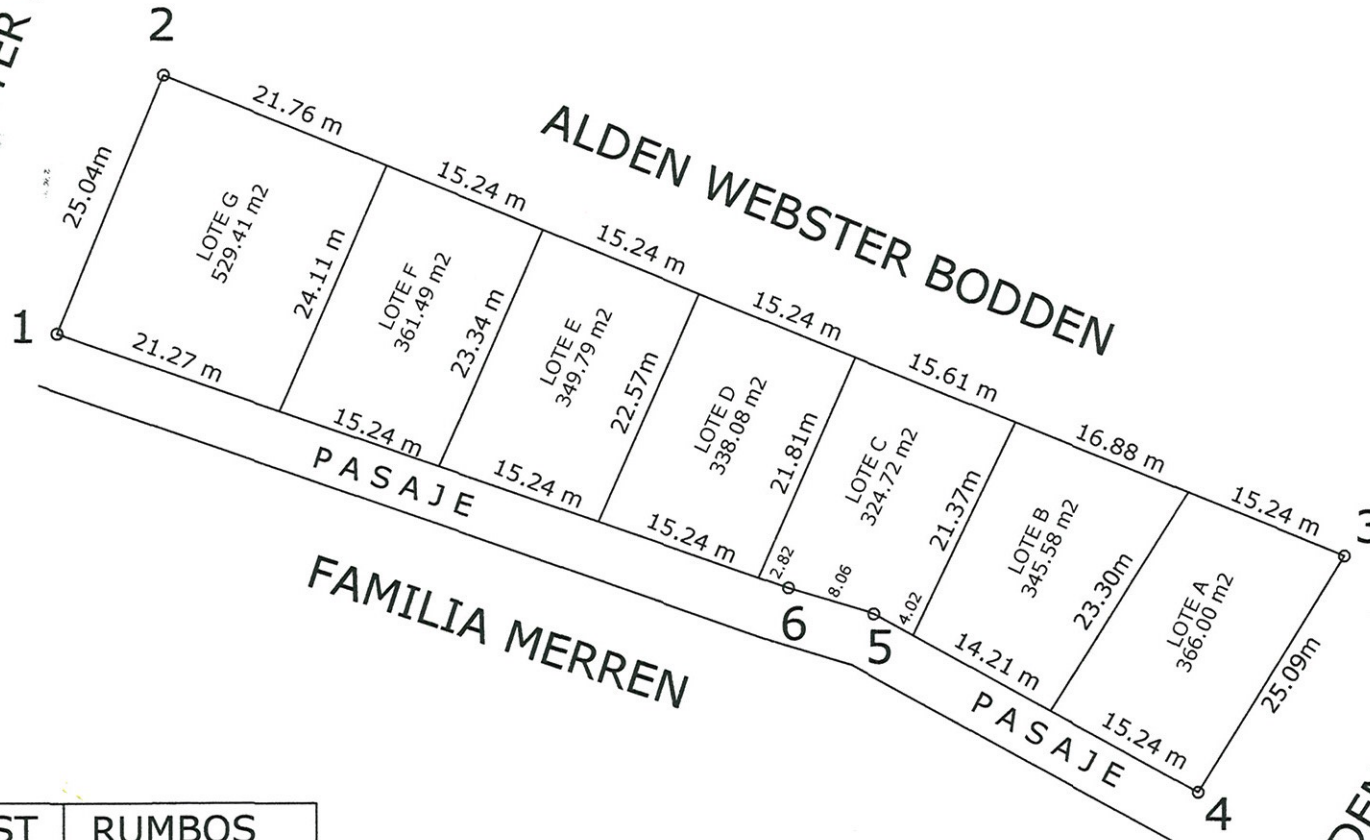


ALDEN WEBSTER B.



EST	DIST	RUMBOS
1-2	25.04	N23 31'08"E
2-3	115.23	S67 45'50"E
3-4	25.09	S31 50'00"W
4-5	33.47	N61 07'21"W
5-6	08.06	N73 21'40"W
6-1	70.00	N70 38'36"W



AREA: 2,615.07 M²
0.65 ACRES

PROP: RONALD LEE GRIFFITH
 UBIC: WATERING PLACE C. GULLY-ROATAN
 LEV: PLACIDO ALEGRIA
 CAL: ING. EVELIO MEJIA
 APRO: ING. KARINA RAMOS 3014
 FECHA: OCTUBRE- 2008
 ESCALA: 1:750